

## Garment Measurements

	46	48	50	52	54	56	58	60	62	64	66
<b>A Length Front</b>		100	101	102	103	104	105				
<b>B Length Back</b>		100	101	102	103	104	105				
<b>C ½ Chest Width</b>		60	62	64	66	68	70				
<b>D ½ Bottom Width</b>		60	62	64	66	68	70				
<b>E Sleeve Length</b>		86	87	88	89	90	91				

### How to measure:

*Garment measurements are specified in Centimeters*

Make sure the garment is flat and straight and avoid pulling in the garment when measuring.

#### **A - Length Front:**

Measure from the highest point on the shoulder, straight down to the bottom of the garment.

#### **B - Length Back:**

Measure from the highest point on the shoulder, straight down to the bottom of the garment.

#### **C - ½ Chest Width:**

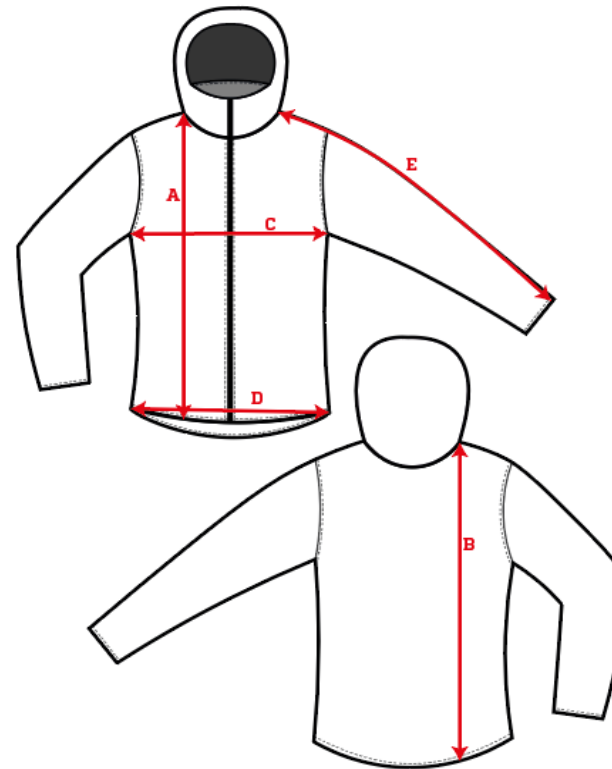
Measure straight across the chest from armpit to armpit.

#### **D - ½ Bottom Width:**

Measure straight across the bottom of the garment from edge to edge.

#### **E - Sleeve Length:**

Measure from the highest point on the shoulder, and follow the shape of the sleeve down to the opening of sleeve.



[See size guide here](#)